

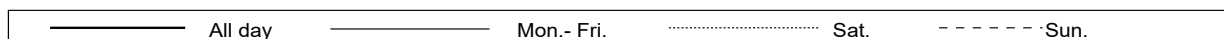
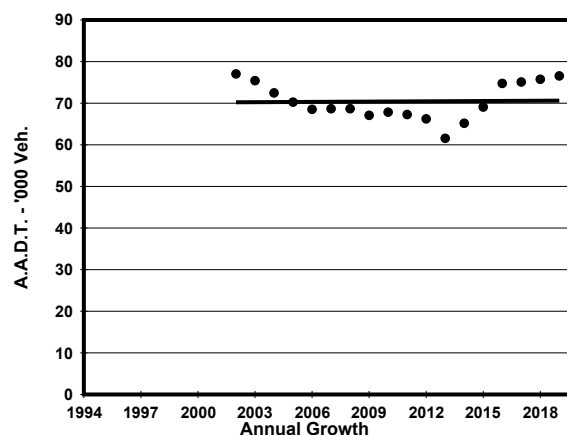
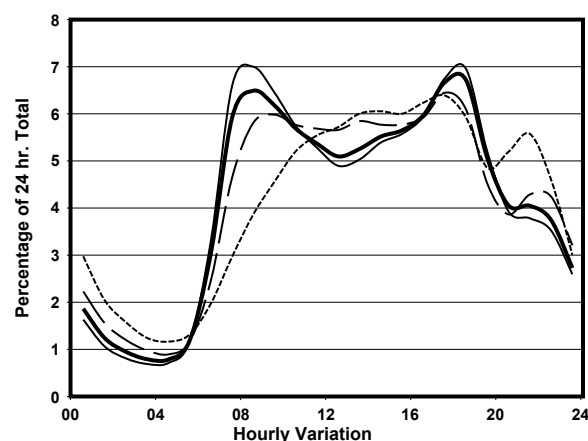
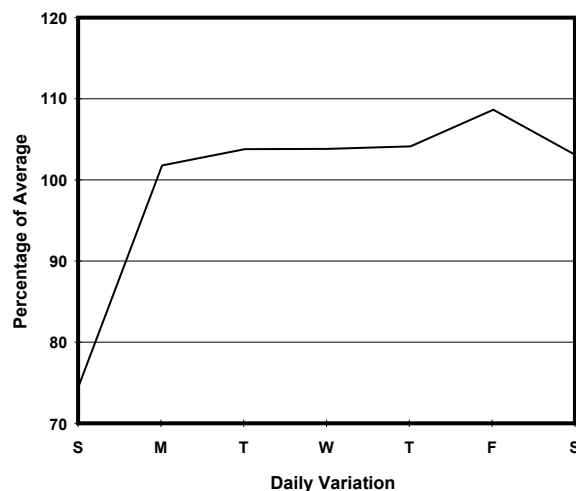
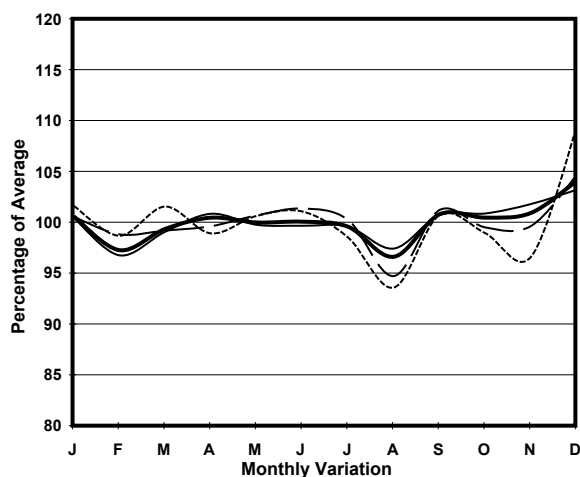
YEAR 2019

LINK TUEN MUN RD (from CASTLE PEAK RD - TSUEN WAN
to TSING LONG HIGHWAY - TING KAU BRIDGE)

CORE STATION 5035
ROAD NETWORK MAJOR
ROAD TYPE EXPRESSWAY



1. TRAFFIC FLOW VARIATION AND GROWTH



2. TRAFFIC CHARACTERISTICS (BY DIRECTION)

Parameter	All - Day	Mon. - Fri.	Sat.	Sun.
EAST BOUND				
A.A.D.T.	38120	40470	39490	28590
R 12 / 24 - %	74.3	75.3	73	68.6
R 16 / 24 - %	86.9	87.2	86.6	85.6
AM Peak Hour	0800-0900	0800-0900	0800-0900	0900-1000
One-way flow at AM peak hour	3110	3560	2840	1640
T - % (AM)	-	-	-	-
PM Peak Hour	1700-1800	1700-1800	1700-1800	1700-1800
One-way flow at PM peak hour	2350	2510	2390	1740
T - % (PM)	-	-	-	-
Prop.of commercial vehicles - 16 hr.	-	-	-	-
WEST BOUND				
A.A.D.T.	38440	40570	40340	29630
R 12 / 24 - %	66.8	67.9	65.9	60.5
R 16 / 24 - %	87.9	88.9	86.1	83.9
AM Peak Hour	0900-1000	0900-1000	0900-1000	0900-1000
One-way flow at AM peak hour	1910	2120	1970	1020
T - % (AM)	-	-	-	-
PM Peak Hour	1800-1900	1800-1900	1800-1900	1700-1800
One-way flow at PM peak hour	3060	3410	2760	1980
T - % (PM)	-	-	-	-
Prop.of commercial vehicles - 16 hr.	-	-	-	-

3. OTHER INFORMATION AND COMMENT